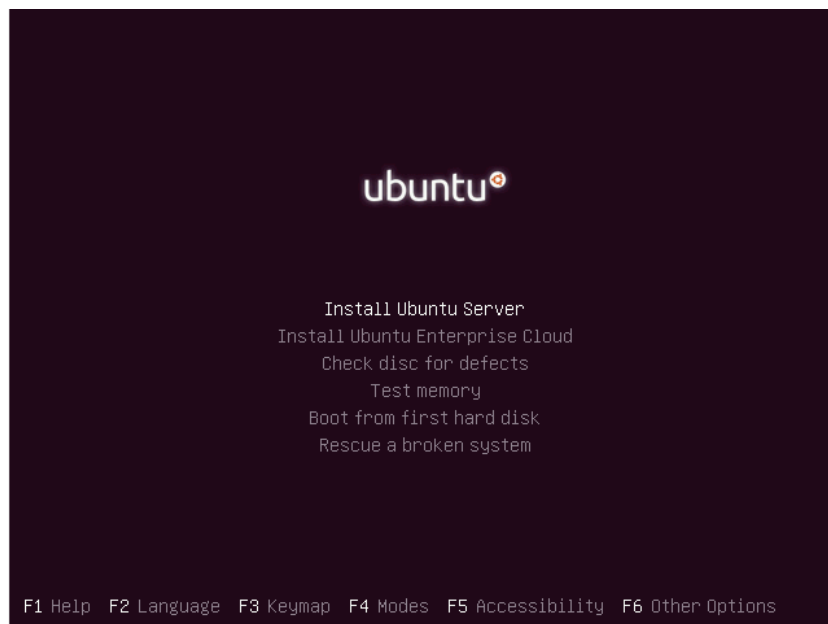


Install Ubuntu Server 10.04 LTS

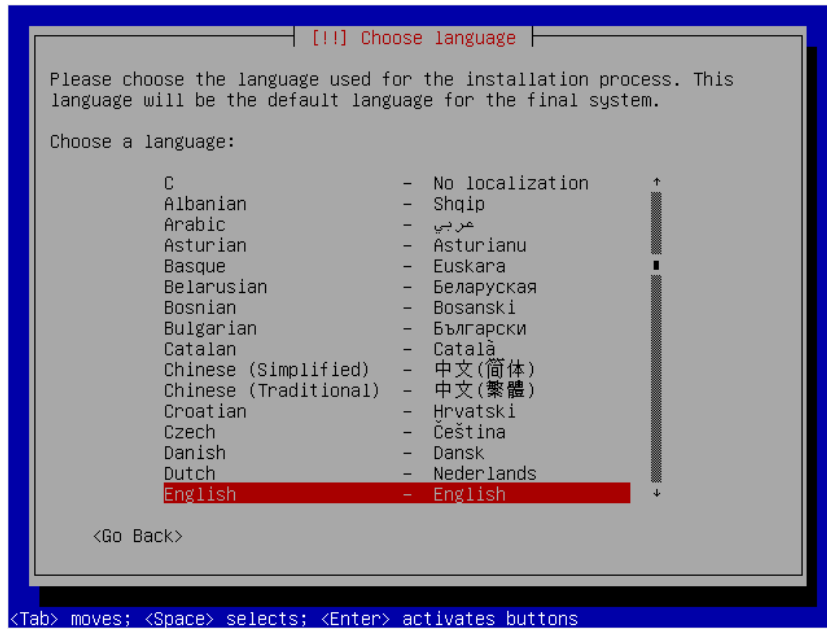
1. Masukkan CD Ubuntu Server 10.04 LTS ke dalam CD-ROM
2. Pilih boot dari CD-ROM
3. Pilih Bahasa instal yang diinginkan



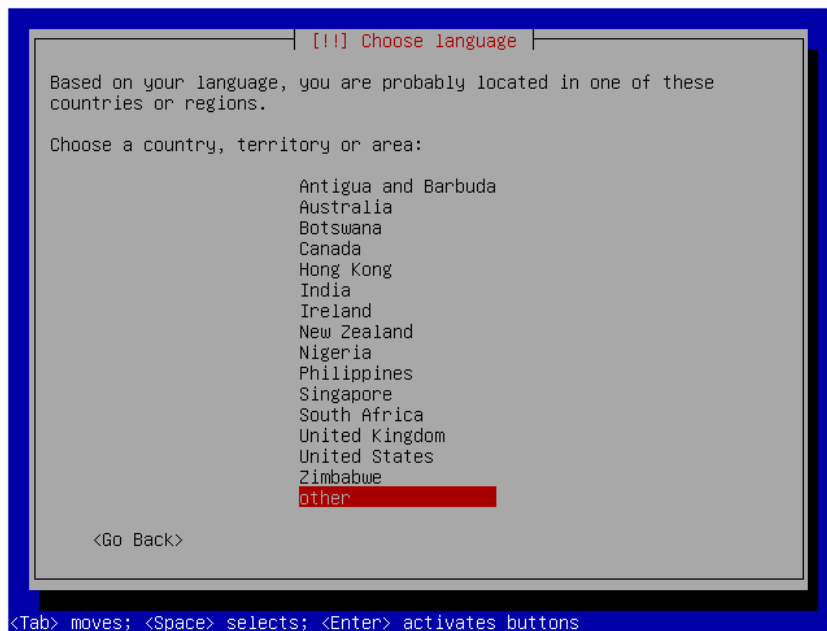
4. Pilih Install Ubuntu Server



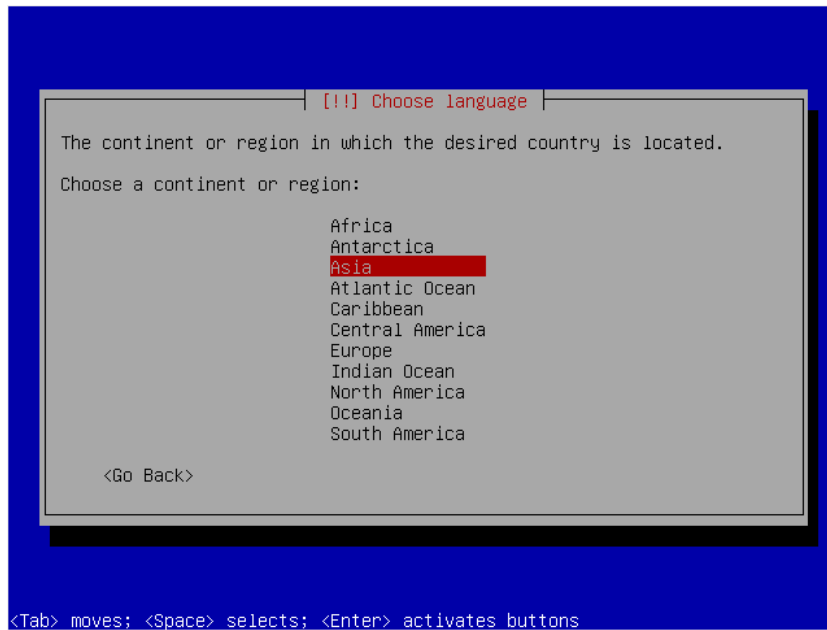
5. Pilih bahasa



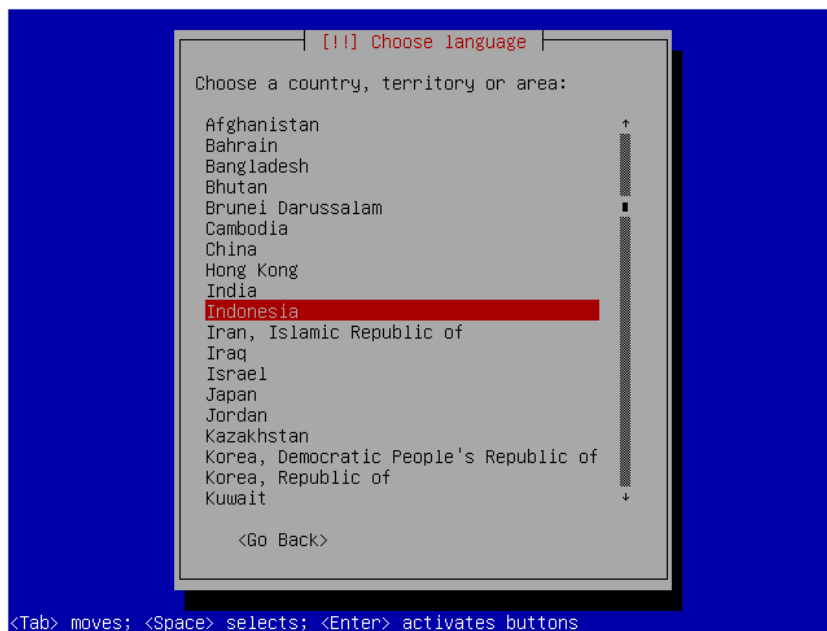
6. Pilih Zona lokasi, pilih Other



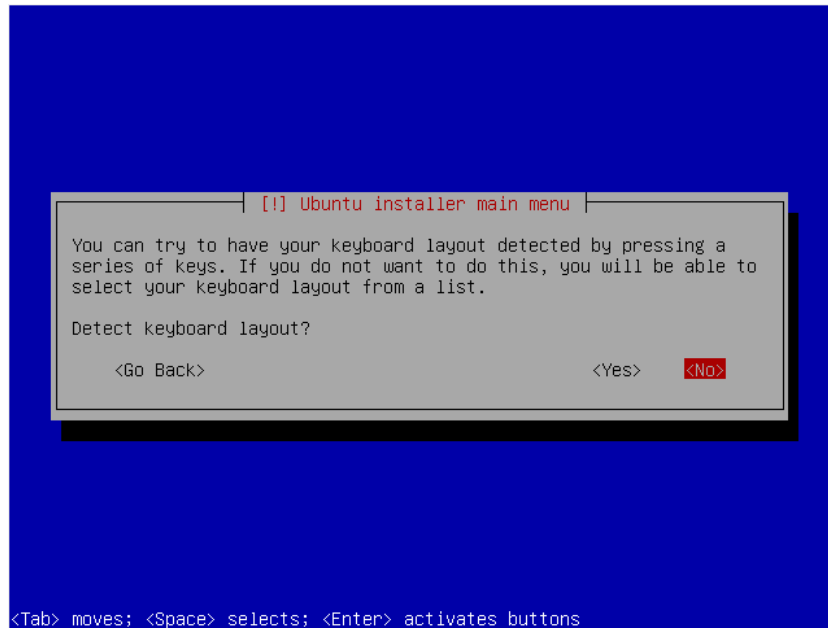
7. Pilih Asia



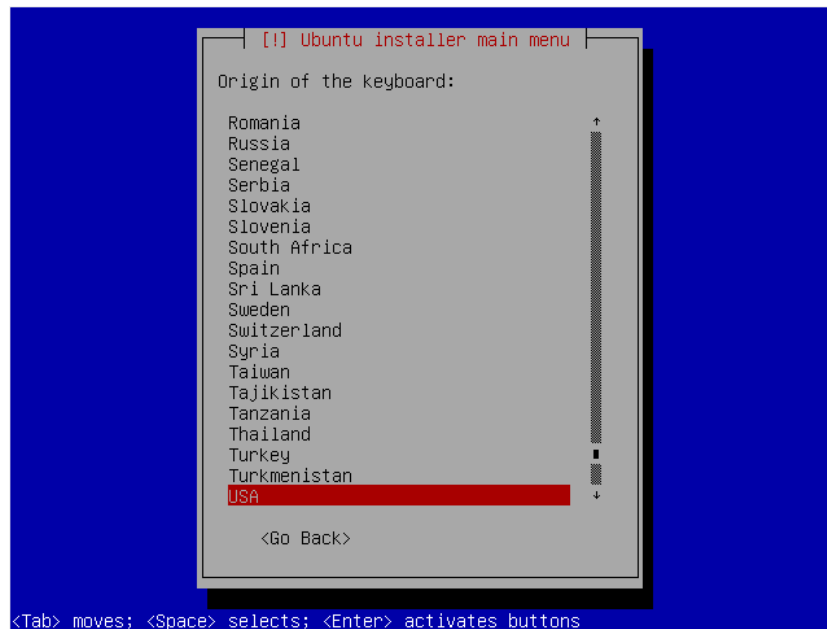
8. Pilih Jakarta



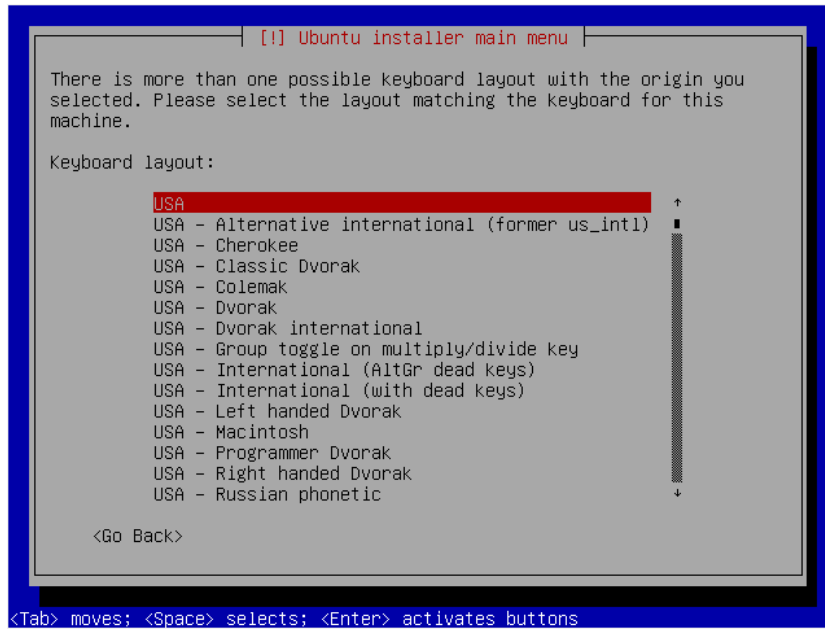
9. Deteksi jenis Keyboard, pilih "No"



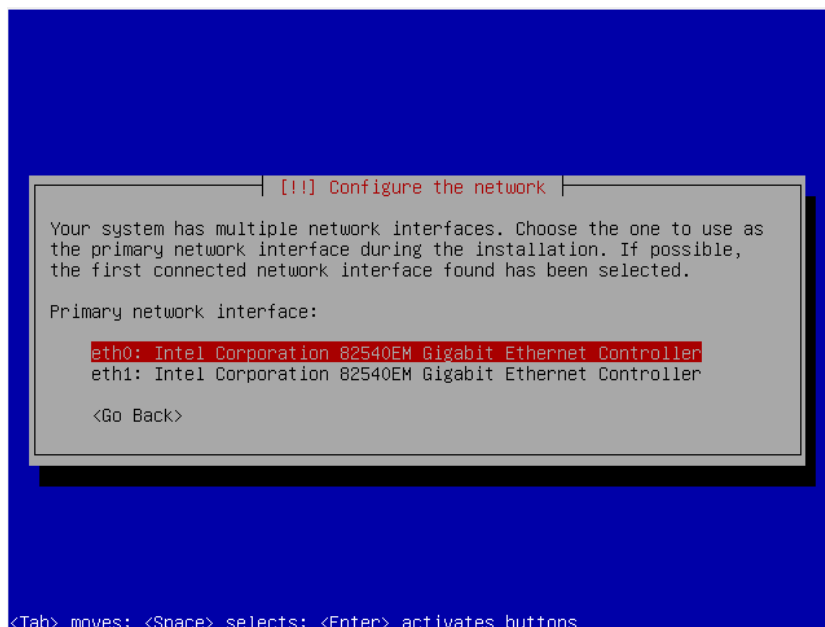
10. Pemilihan jenis Keyboard, pilih USA



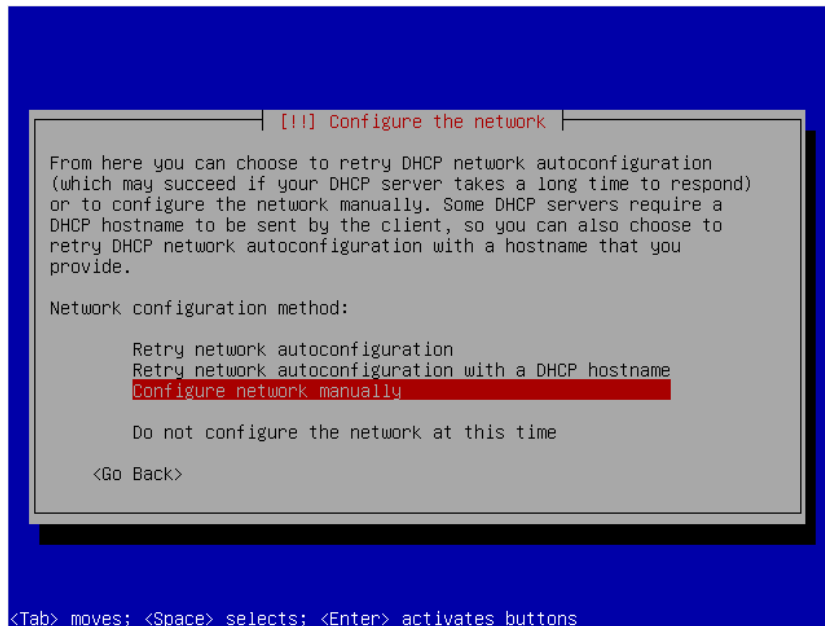
11. Pemilihan layout Keyboard, pilih USA



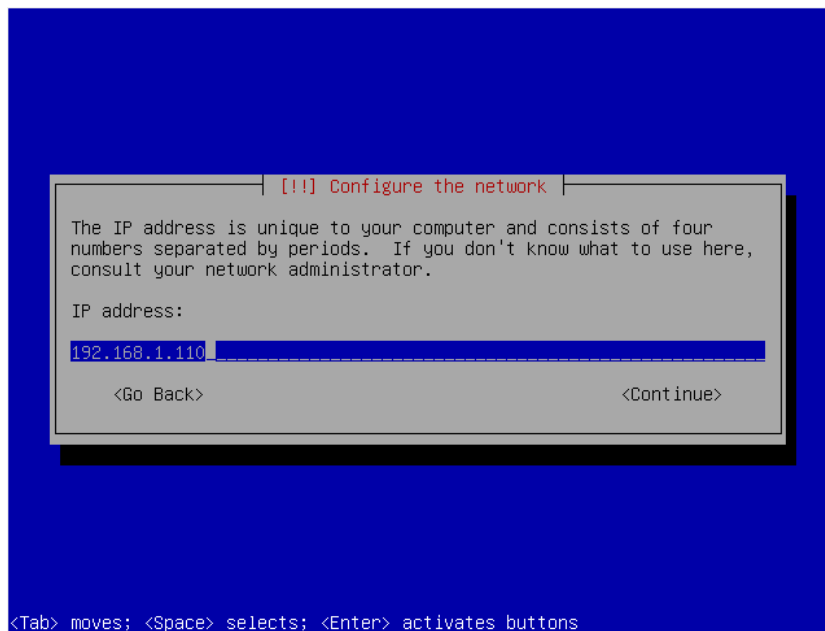
12. Apabila pada PC terdapat lebih dari 1 LAN Interface maka kita akan diminta untuk memilih LAN Interface utama. Pilih salah satu.



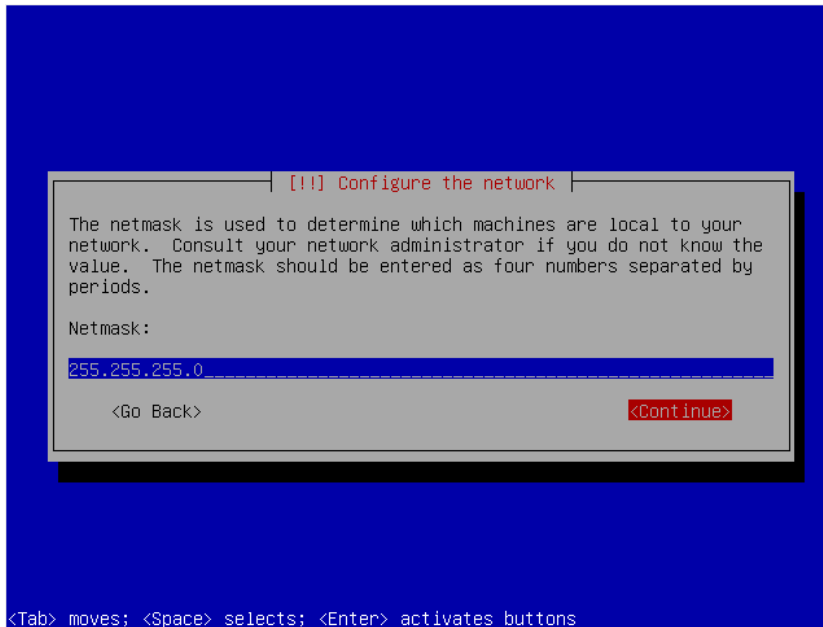
13. Apabila Interface yang dipilih berhasil mendapatkan IP dari DHCP maka langkah 13 – 17 tidak akan muncul. Jika tidak berhasil maka kita harus memasukkan IP secara manual dengan memilih “Configure Networks manually”.



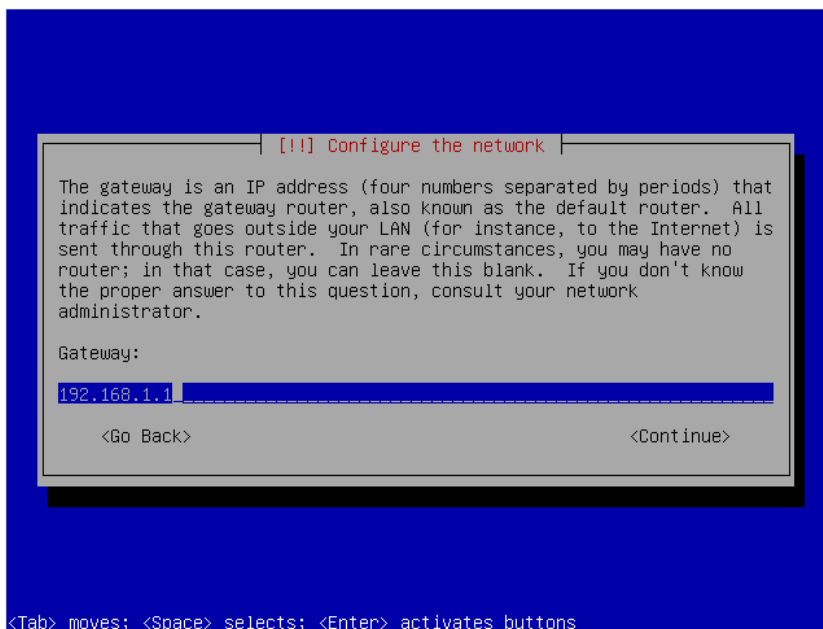
14. Masukkan alamat IP. Lalu “Continue”



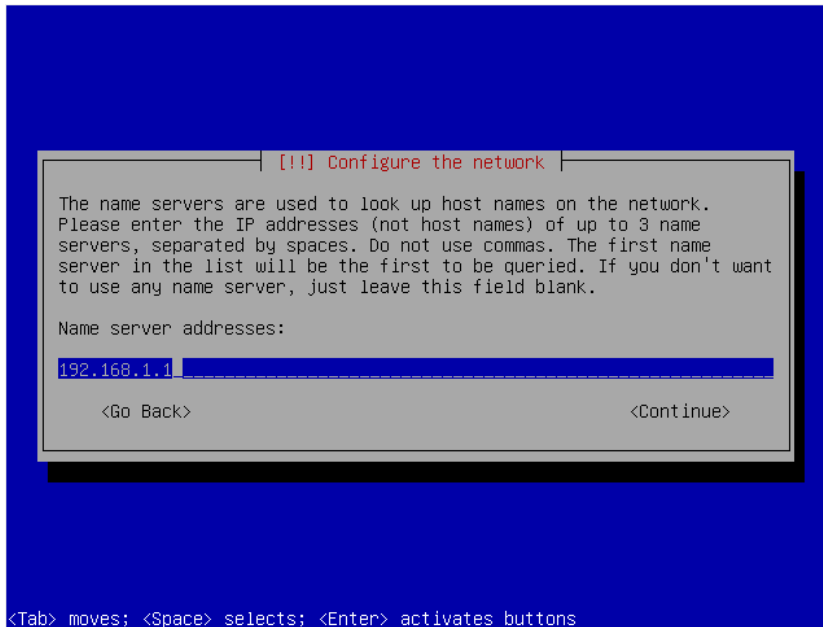
15. Masukkan netmask. Lalu "Continue"



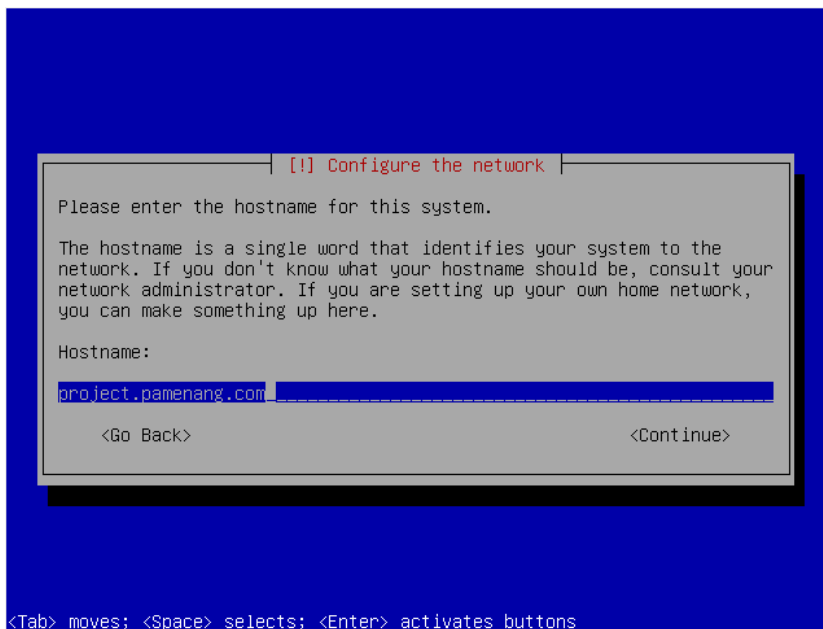
16. Masukkan IP Gateway. Lalu "Continue"



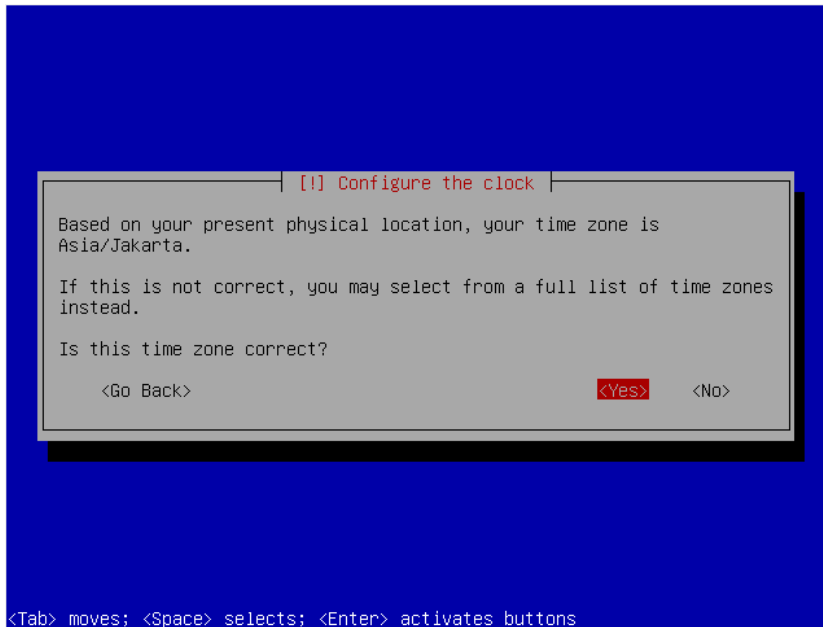
17. Isi IP DNS. Lalu "Continue"



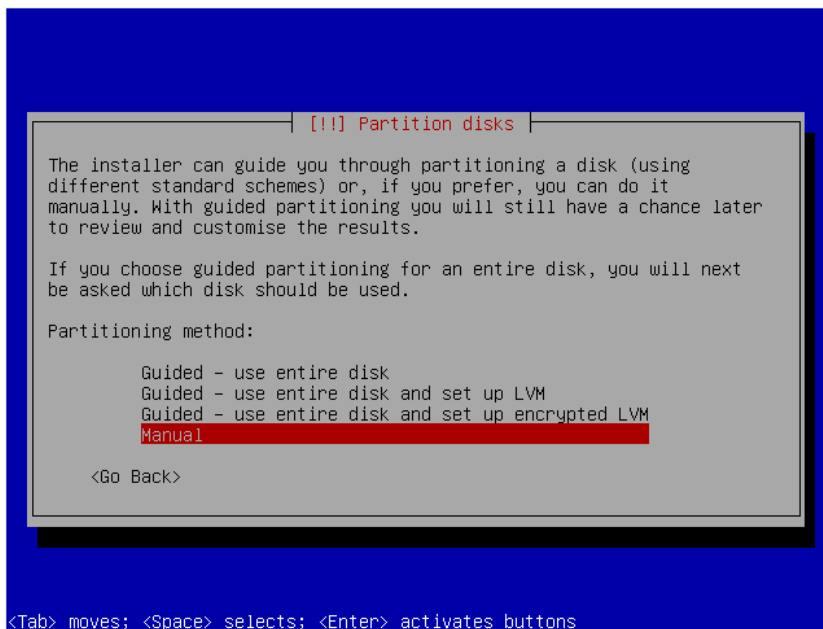
18. Isikan nama host. Lalu "Continue"



19. Konfigurasi Time zone, jika telah benar maka pilih “Yes” jika salah pilih “No”



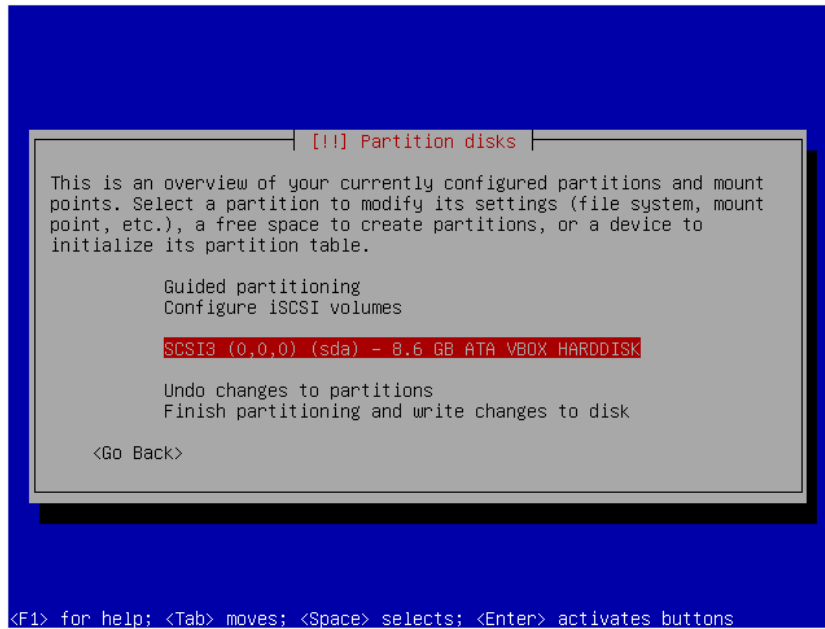
20. Pengaturan Hardisk, Pilih “Manual”



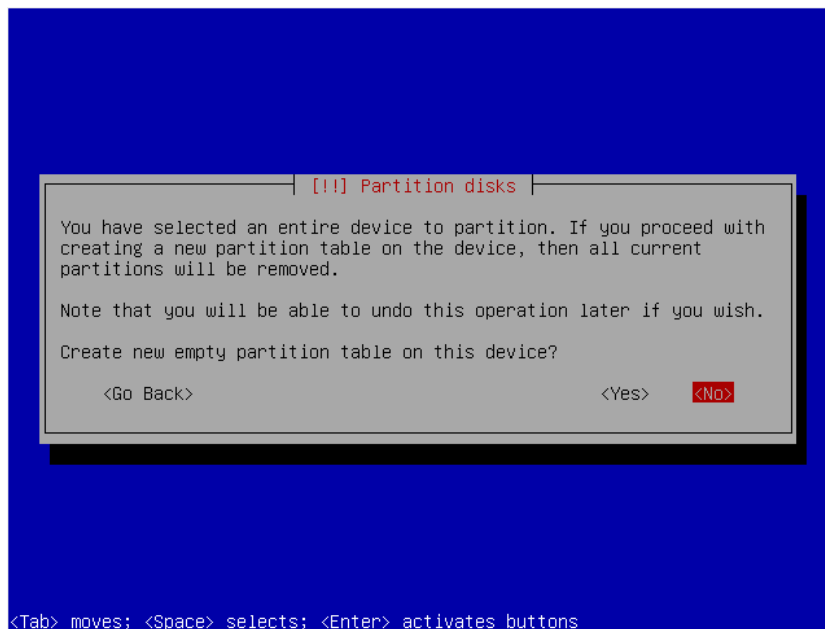
Rencana partisi hardisk :

/	8GB	ext4
/home	2GB	xfs
Swap	sisanya	

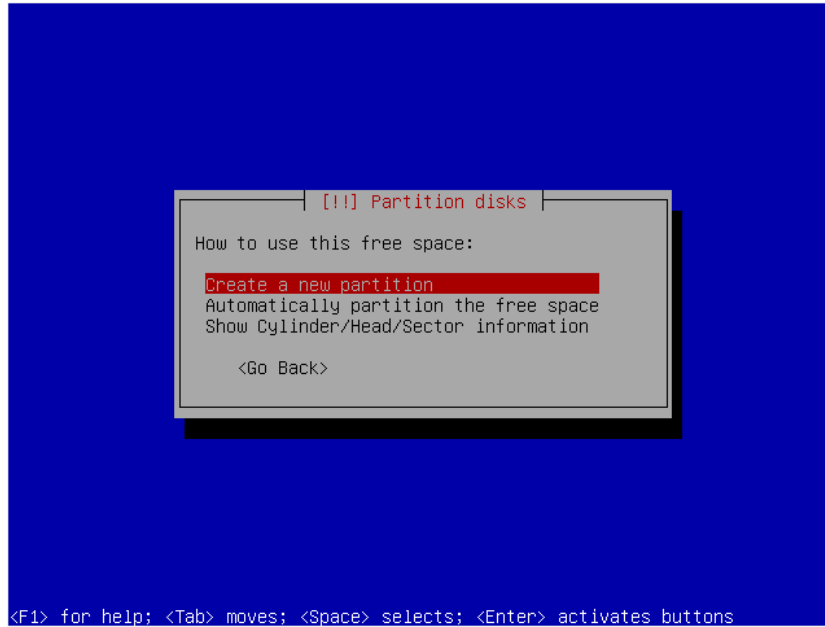
21. Pilih hardisk, sesuai dengan hardisk yang akan kita instal Ubuntu Server.



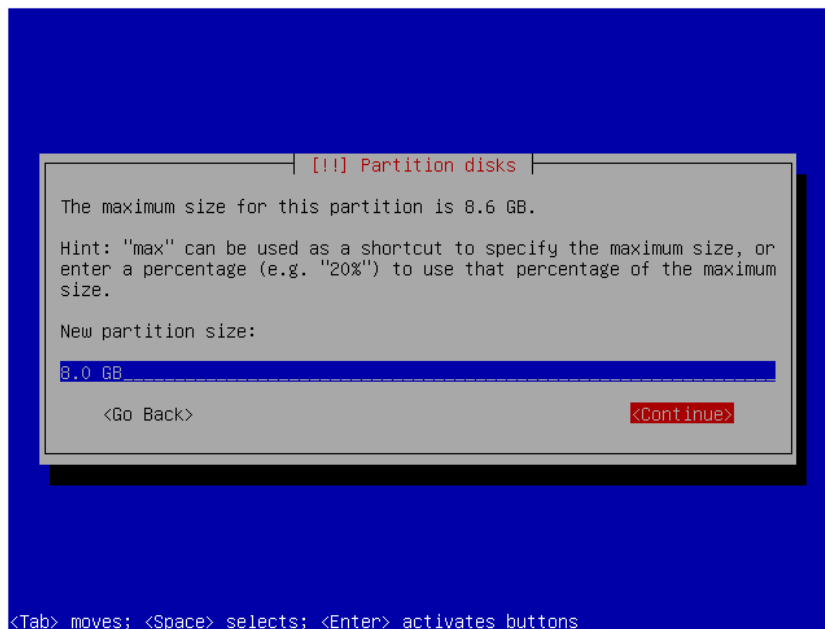
22. Pilih "Yes".



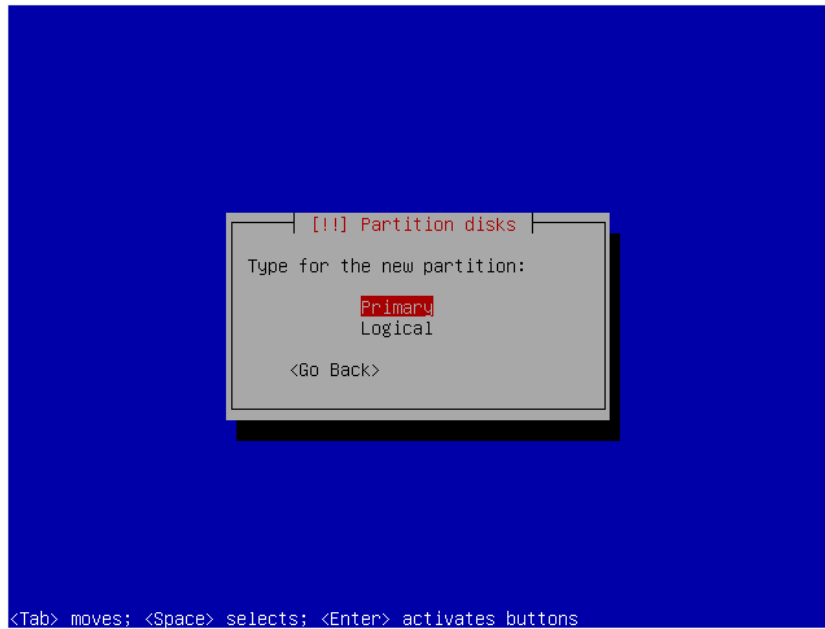
23. Pilih "Create a new partition".



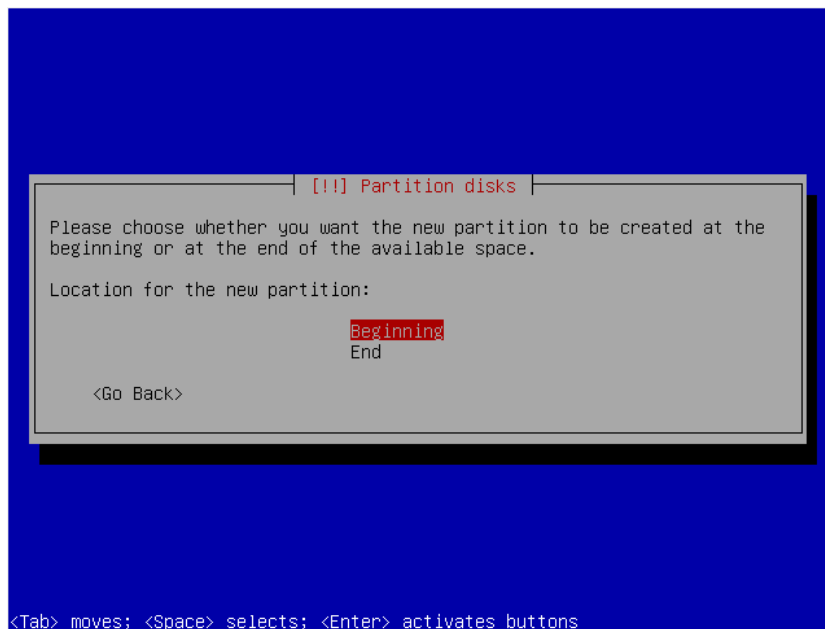
24. Isikan ukuran partisi yang akan kita buat. Lalu "Continue".



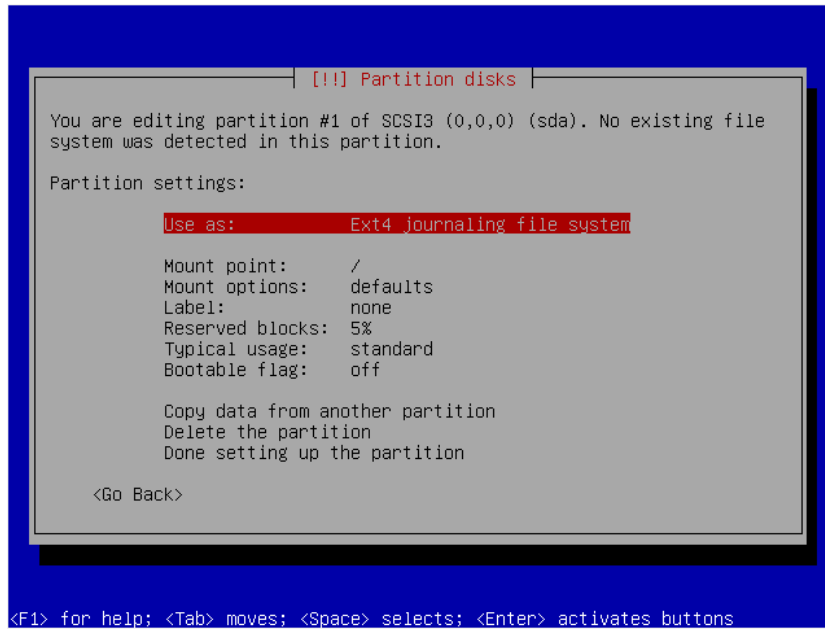
25. Pilih "Primary".



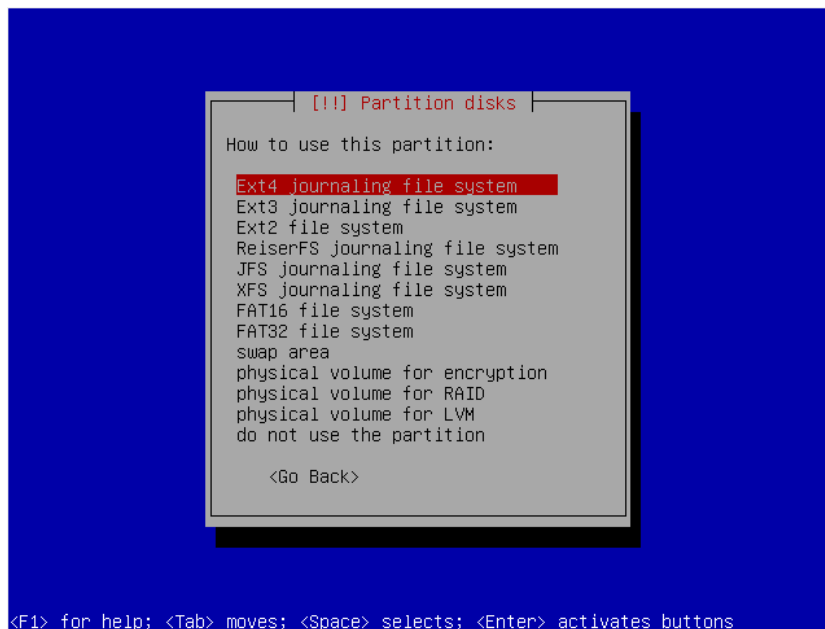
26. Pilih "Beginning".



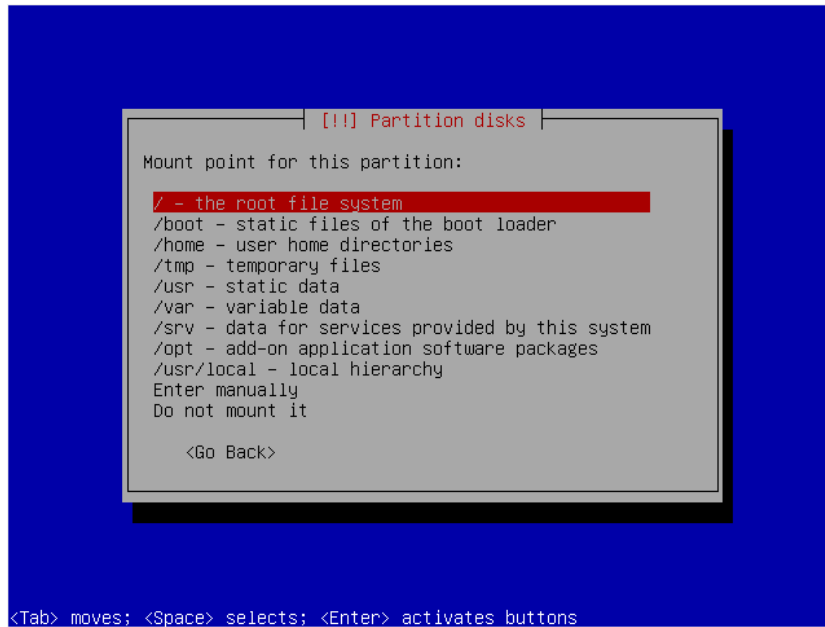
27. Pilih "Use as:" untuk memilih jenis partisi.



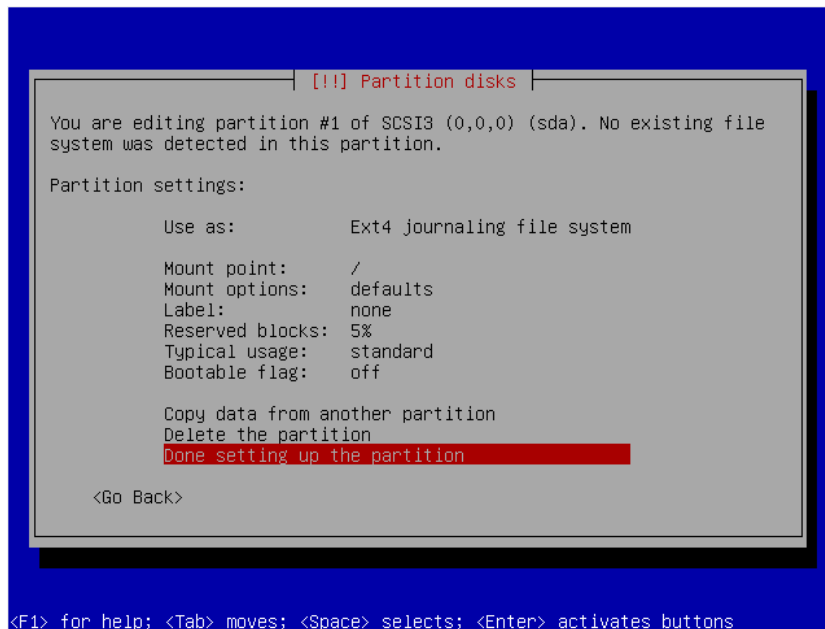
28. Pilih jenis partisi sesuai kebutuhan.



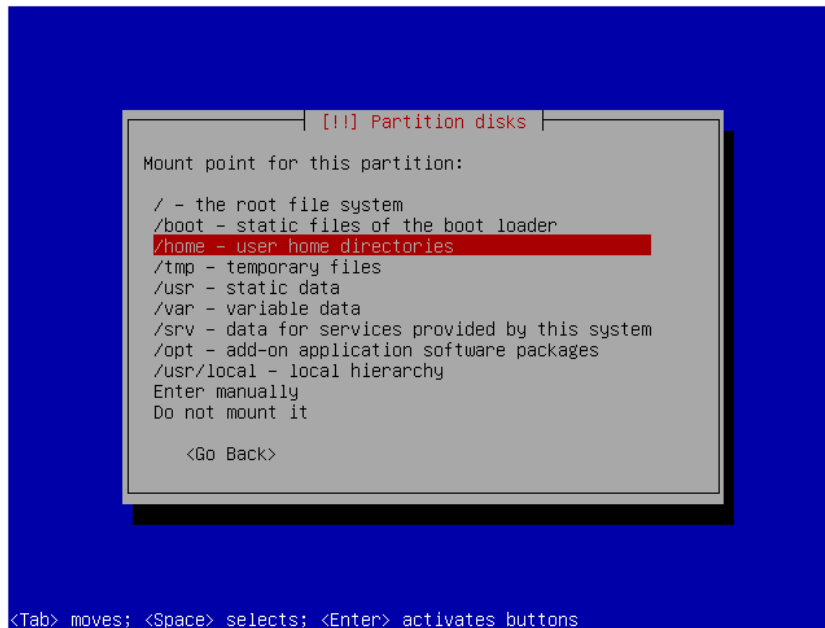
29. Pemilihan Mount point. Pilih “/” atau sesuai rancangan anda sendiri.



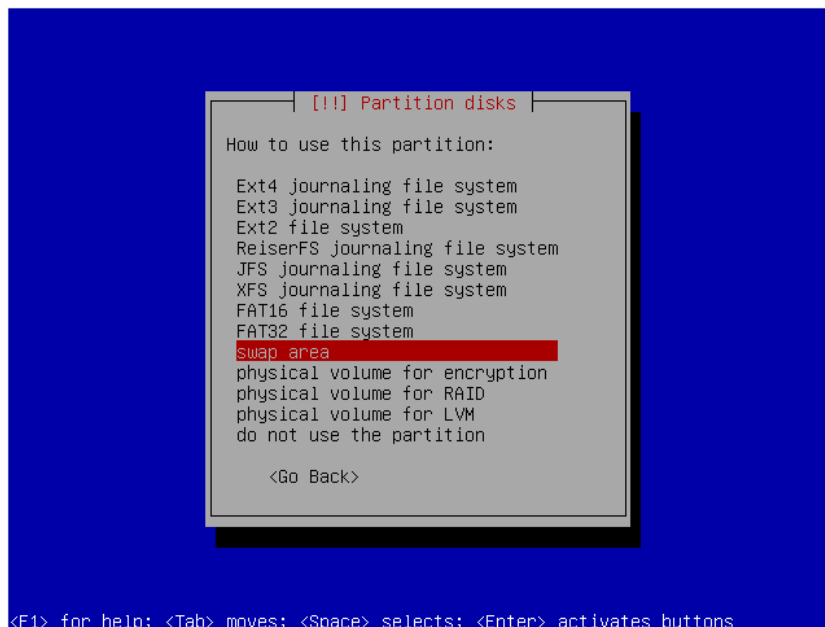
30. Pilih “Done setting up the partition”.



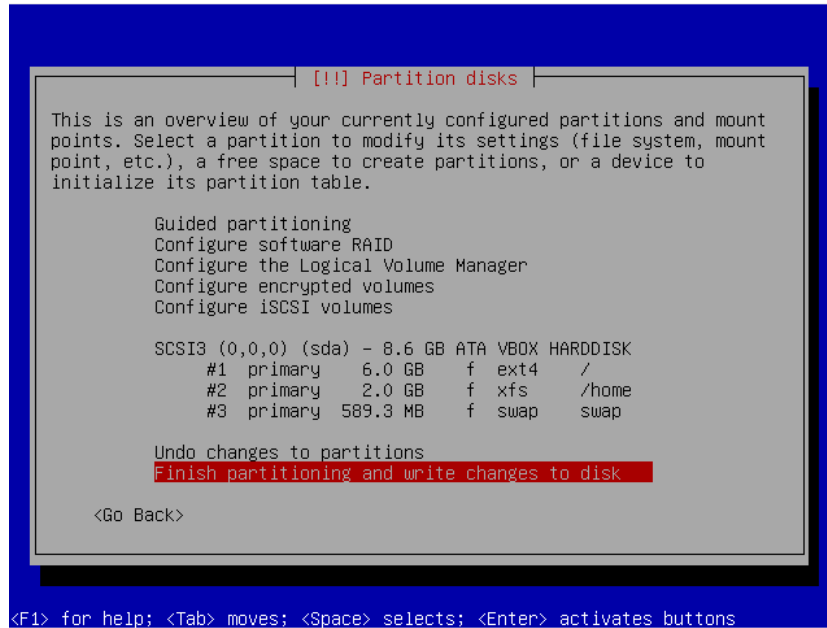
31. Ulangi langkah 23 untuk membuat partisi baru pada "FREE SPACE". Namun pilih Use as: "xfs" dan Mount point "/home"



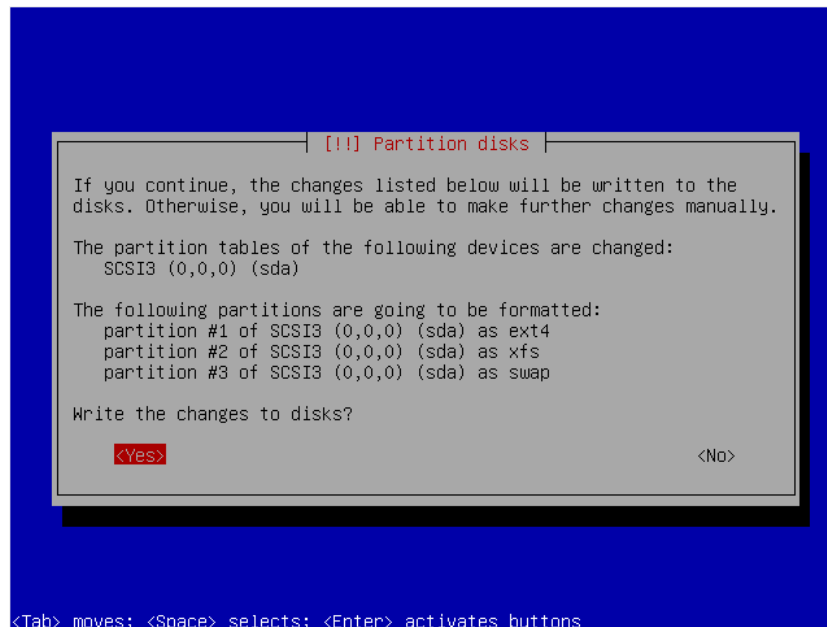
32. Ulangi langkah 23 untuk membuat partisi swap.



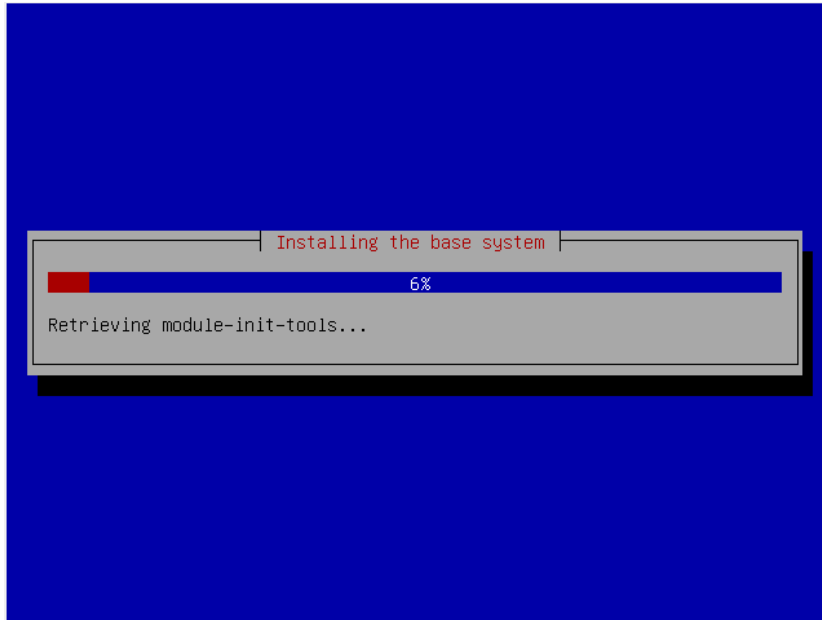
33. Setelah selesai pengaturan partisi, pilih “Finish partitioning and write changes to disk”.



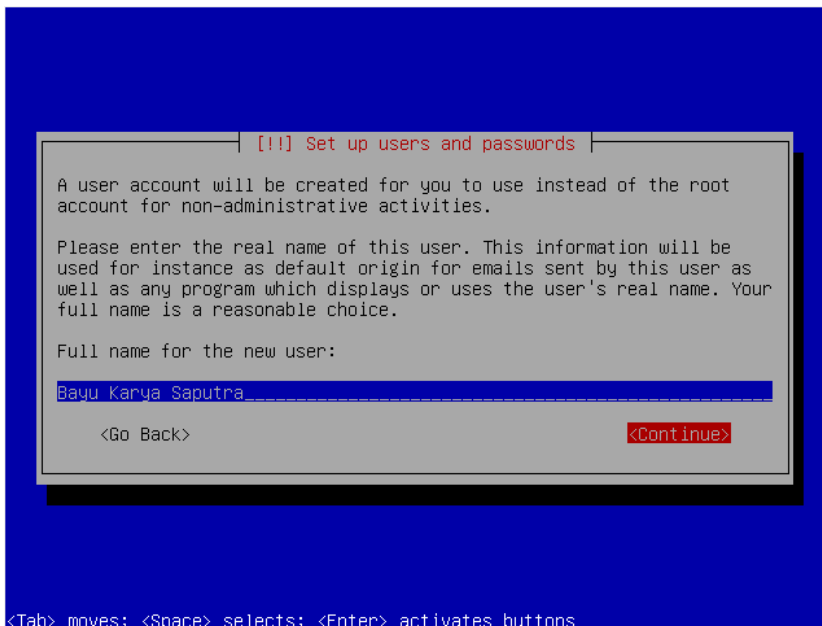
34. Pilih “Yes”.



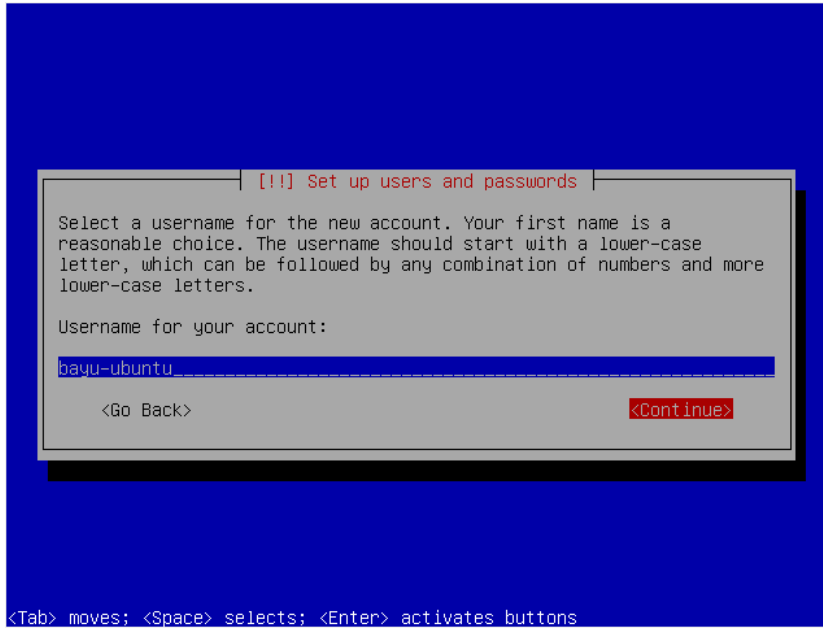
35. Proses instalasi...



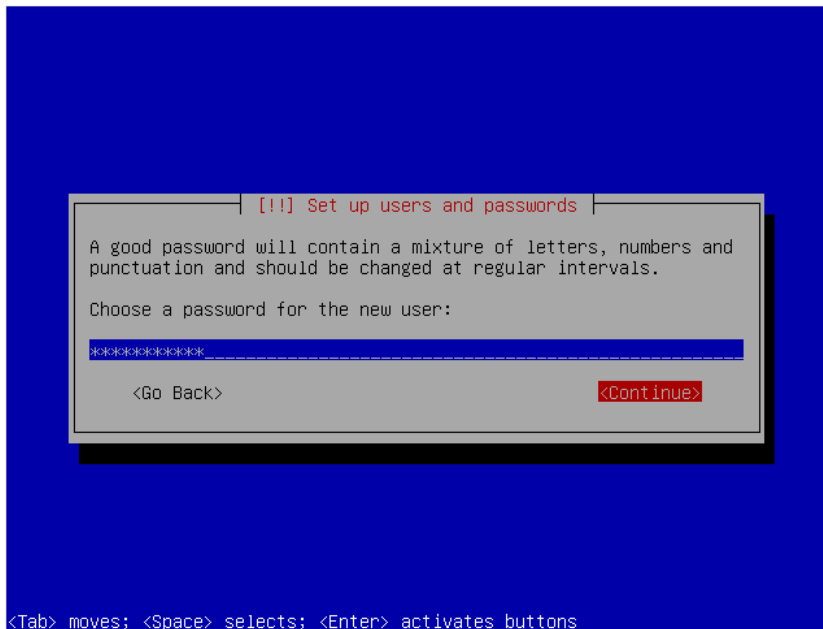
36. Setelah selesai, masukkan Nama Lengkap. Lalu "Continue".



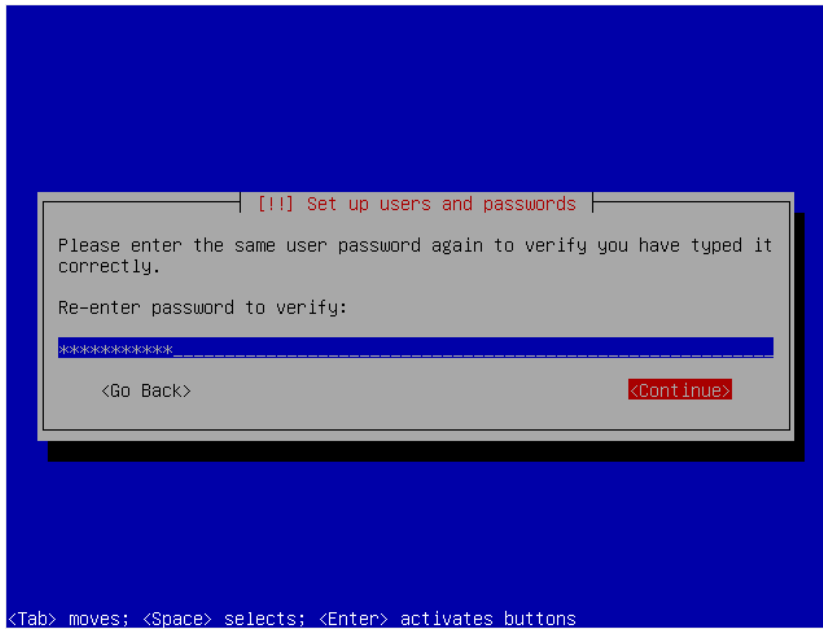
37. Masukkan username. Lalu "Continue".



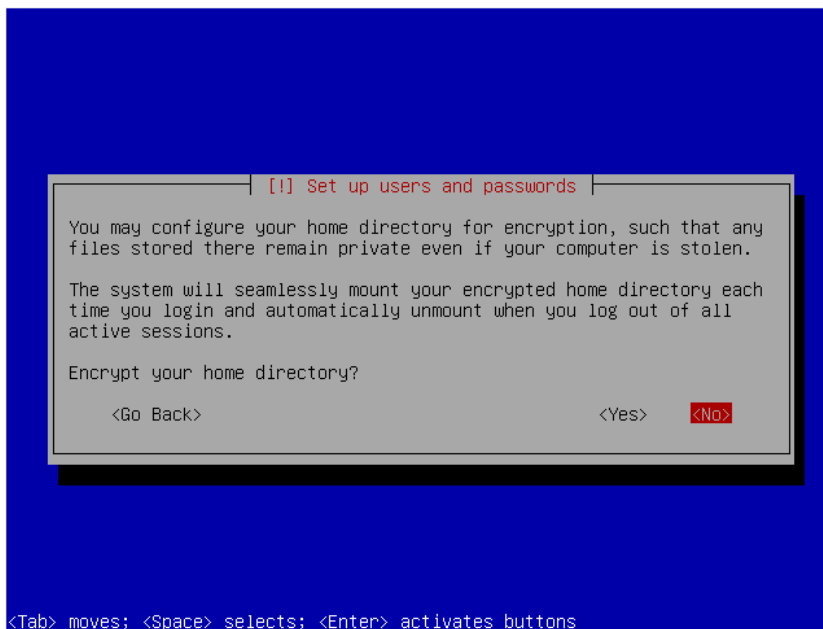
38. Masukkan password. Lalu "Continue".



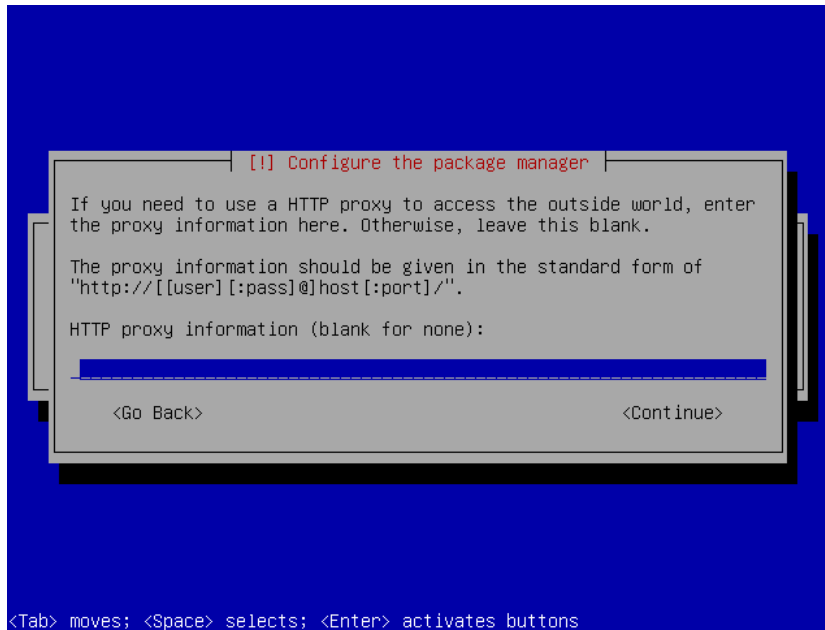
39. Masukkan password sekali lagi. Lalu "Continue".



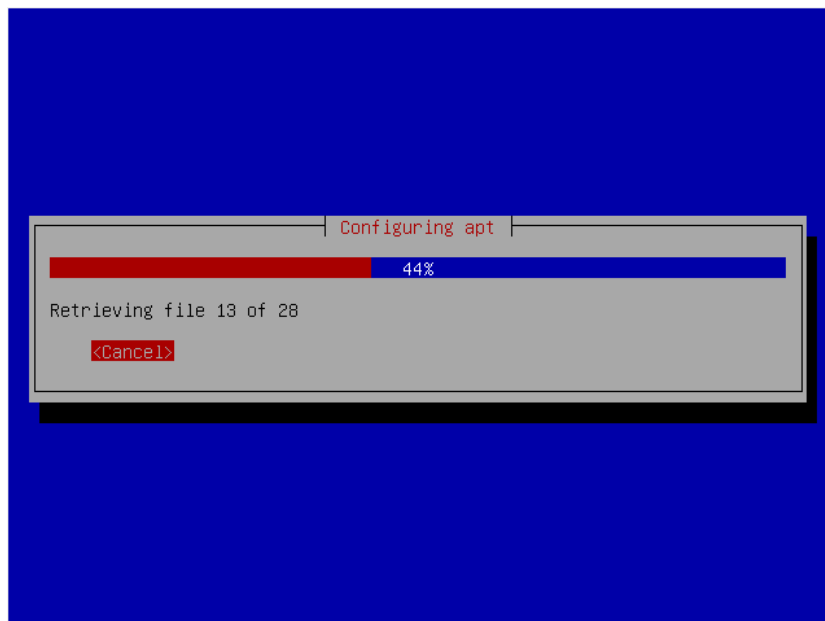
40. Pilih "No" jika tidak ingin mengenkripsi folder /home.



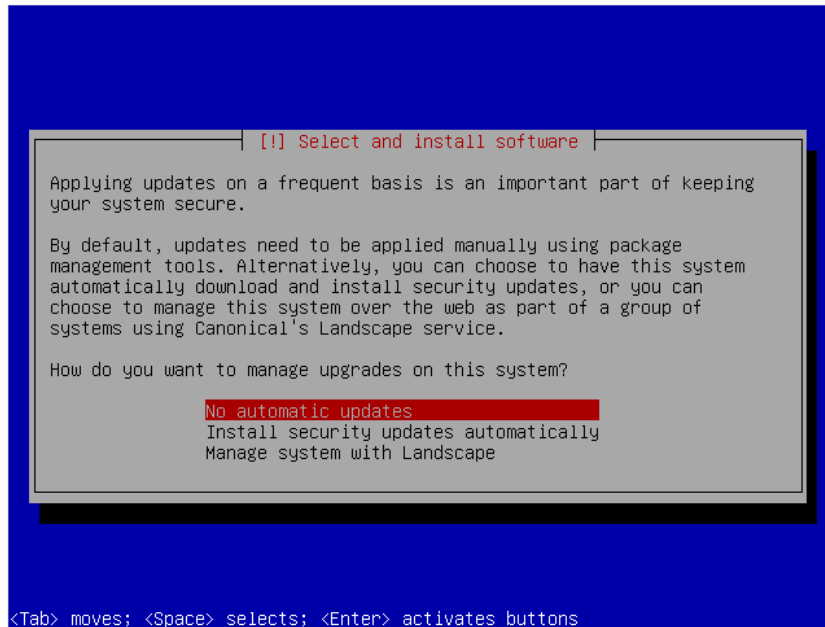
41. Isi alamat proxy jika anda menggunakan proxy, jika tidak biarkan kosong. Lalu "Continue".



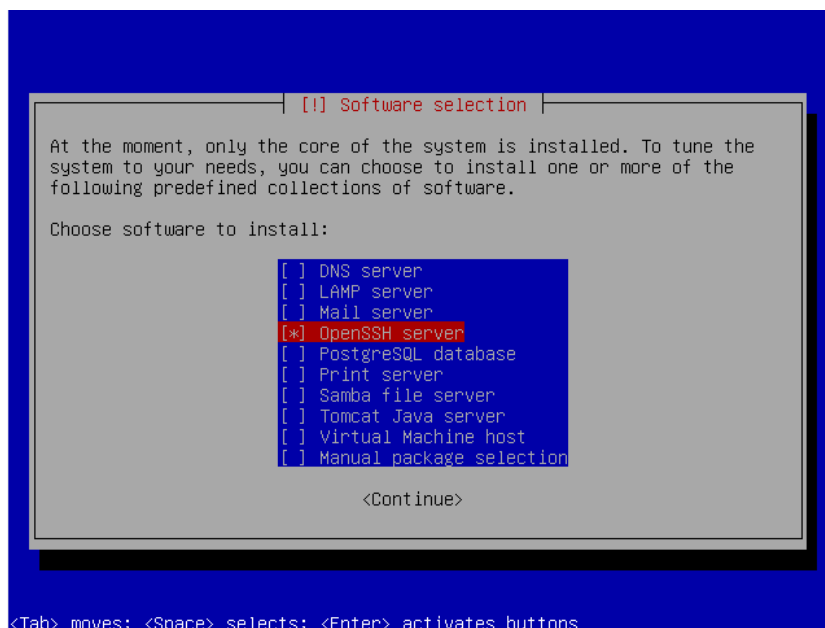
42. Konfigurasi APT, biarkan sampai selesai



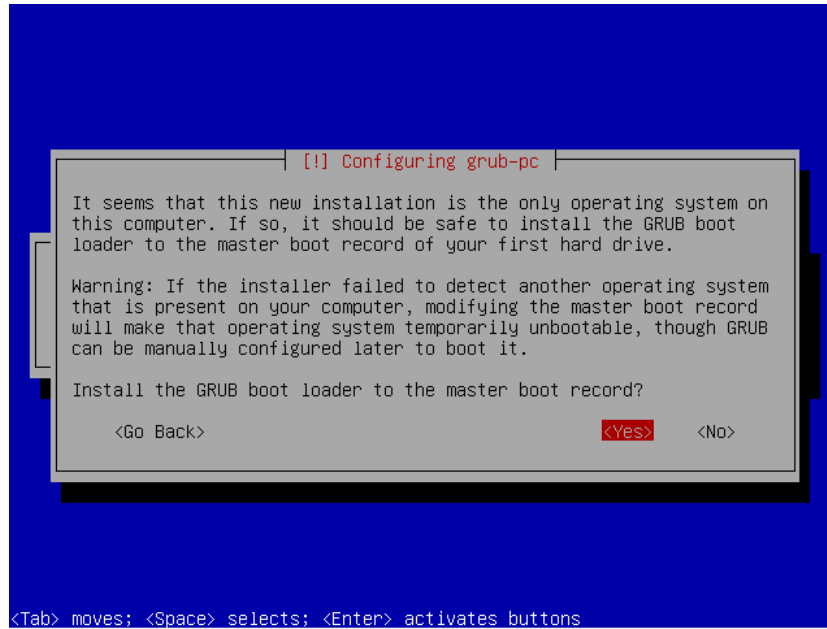
43. Pilih “No otomatis update” jika anda tidak ingin server update secara otomatis.



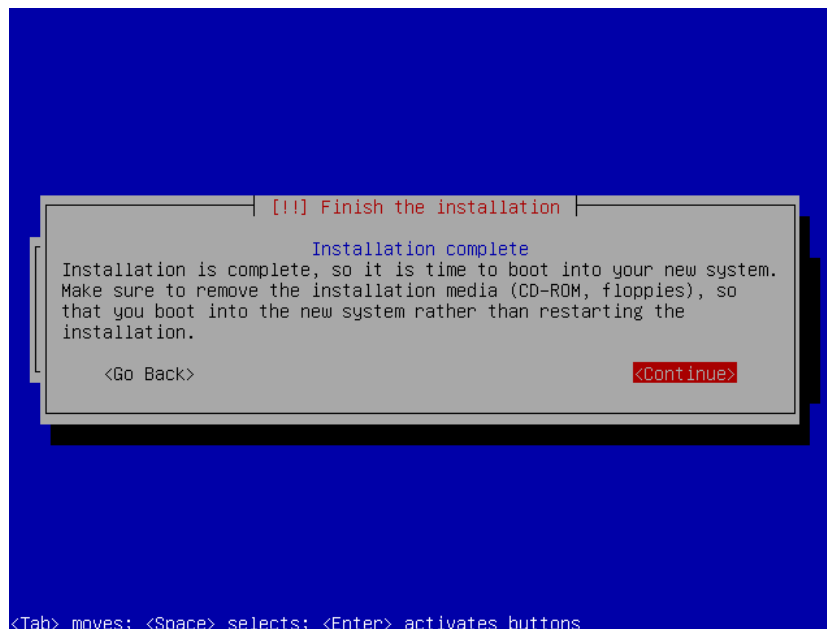
44. Pilih aplikasi server apa saja yang akan di instal. Sebagai contoh di sini hanya menginstall “Openssh Server”.



45. Install GRUB, pilih "Yes".



46. Install Ubuntu Server telah selesai. Keluarkan CD Ubuntu dari CD-ROM, lalu "Continue" untuk restart dan boot dari hardisk.



47. Tampilan Ubuntu Server 10.04 LTS setelah berhasil boot. Silahkan login menggunakan username dan password sesuai yang kita masukkan saat instalasi.

```
Ubuntu 10.04.3 LTS project tty1
project login: bayu-ubuntu
Password:
```

48. Hasil login

```
686 GNU/Linux
Ubuntu 10.04.3 LTS

Welcome to Ubuntu!
 * Documentation: https://help.ubuntu.com/

System information as of Mon Oct 31 01:32:04 WIT 2011

System load:  0.17          Processes:      85
Usage of /home: 0.3% of 1.85GB  Users logged in:  0
Memory usage:  3%          IP address for eth0: 10.0.2.15
Swap usage:    0%

Graph this data and manage this system at https://landscape.canonical.com/

31 packages can be updated.
23 updates are security updates.

The programs included with the Ubuntu system are free software;
the exact distribution terms for each program are described in the
individual files in /usr/share/doc/*/copyright.

Ubuntu comes with ABSOLUTELY NO WARRANTY, to the extent permitted by
applicable law.

To run a command as administrator (user "root"), use "sudo <command>".
See "man sudo_root" for details.

bayu-ubuntu@project:~$
```

Selesai